



103 Fairlyn Drive, Kingswood, Bristol, BS15 4PZ

£280,000

This delightful ideal first time buy is available to view and is sure not to be on the market for long! This semi detached property boasts added useful porch, hallway, full width lounge, stylish kitchen breakfast room and shower room on the ground floor. Upstairs there are two large full width bedrooms, ideal for sharing. This home benefits from uPVC double glazing, gas central heating, has ample parking to the front and a large patio and lawned garden to the rear with summerhouse and storage.

Viewing Highly recommended.

Energy Rating D, Council Tax Band B.

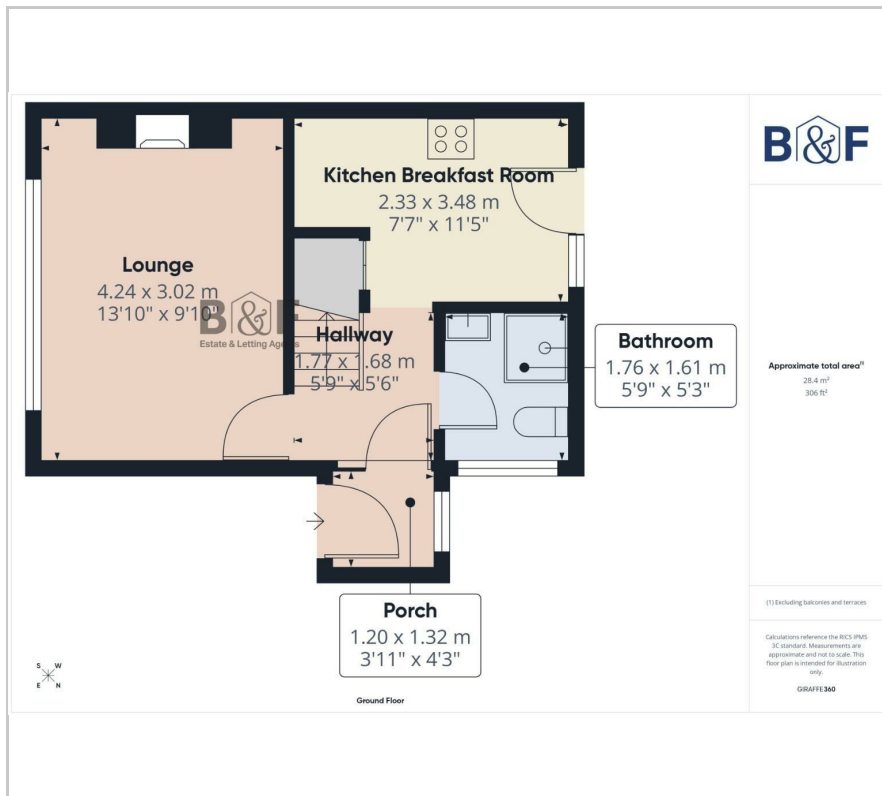
- Semi Detached Home
- Two Double Bedrooms
- Full Width Lounge
- Handy Porch
- Kitchen Breakfast Room
- Ground Floor Shower Room
- Ample Parking
- Large Rear Garden
- Summerhouse
- GCH & D/Glazing

Viewing

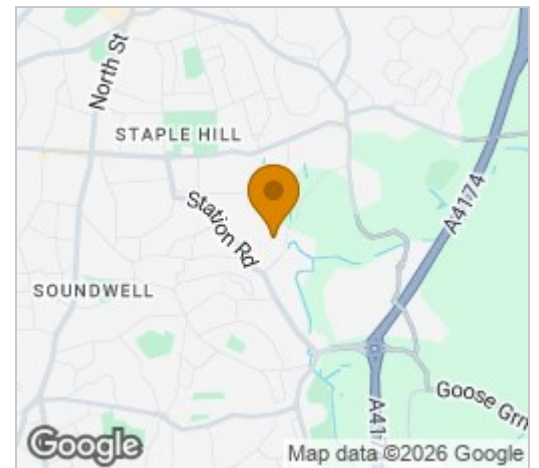
Please contact our Brunt & Fussell Ltd Office on 01179566004 if you wish to arrange a viewing appointment for this property or require further information.



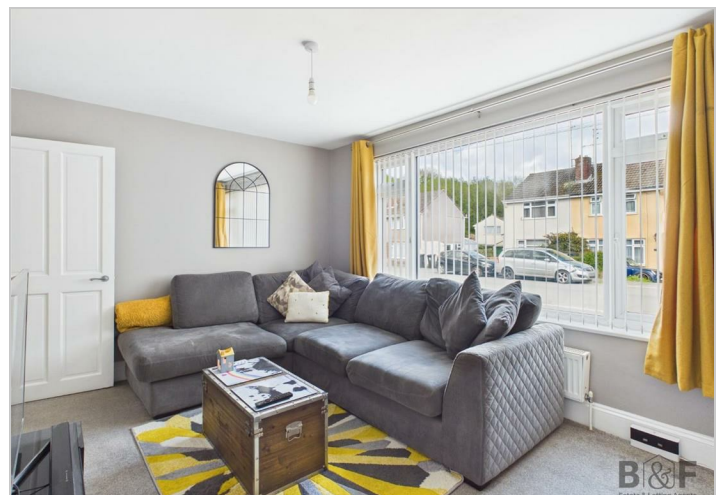
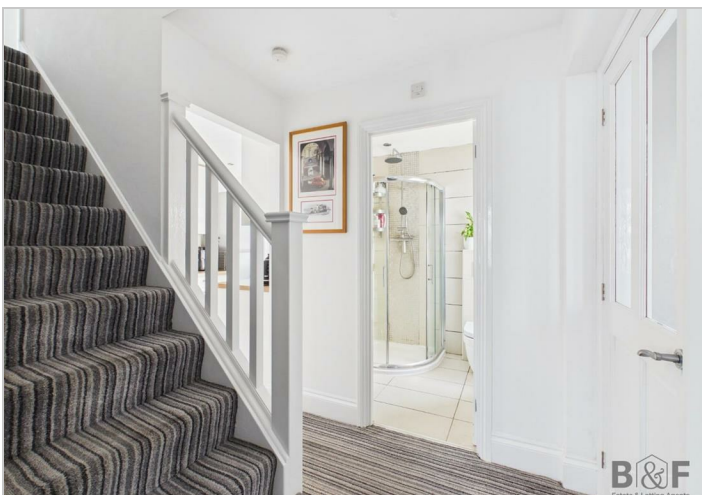
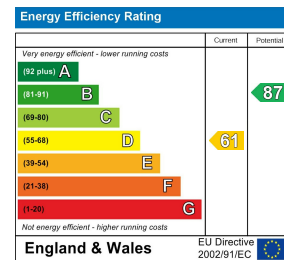
Floor Plan



Area Map



Energy Efficiency Graph



These particulars, whilst believed to be accurate are set out as a general outline only for guidance and do not constitute any part of an offer or contract. Intending purchasers should not rely on them as statements of representation of fact, but must satisfy themselves by inspection or otherwise as to their accuracy. No person in this firm's employment has the authority to make or give any representation or warranty in respect of the property.

141 High Street, Staple Hill, Bristol, BS16 5HQ

Tel: 01179566004 Email: info@bruntandfussell.co.uk www.bruntandfussell.co.uk